

CACHE VALLEY LANDSCAPE

If viewed in terms of quantitative measurements, economic progress dictates not only the physical image of a landscape but, more potentially, the cycles and processes inherent in that landscape as well. There is, of course, a fragile but forceful relationship between quality and quantity, actually a continual interrelationship. In a landscape, this interrelationship is projected in various aspects and proceedings, both ecological and cultural. So, when the balance of relationships affects the processes from a significantly quantitative point, the continuity of the landscape experience is no longer perceived; awareness of the essential cycles and life enforcing movements becomes obscured by disharmonious elements.

But witness a landscape where the cycles, spatial continuity and visual satisfactions function as dynamic, healthy processes. Such a landscape exhibits the attainment of meaningful form through a balance between vital interrelationships.

David Biedermann

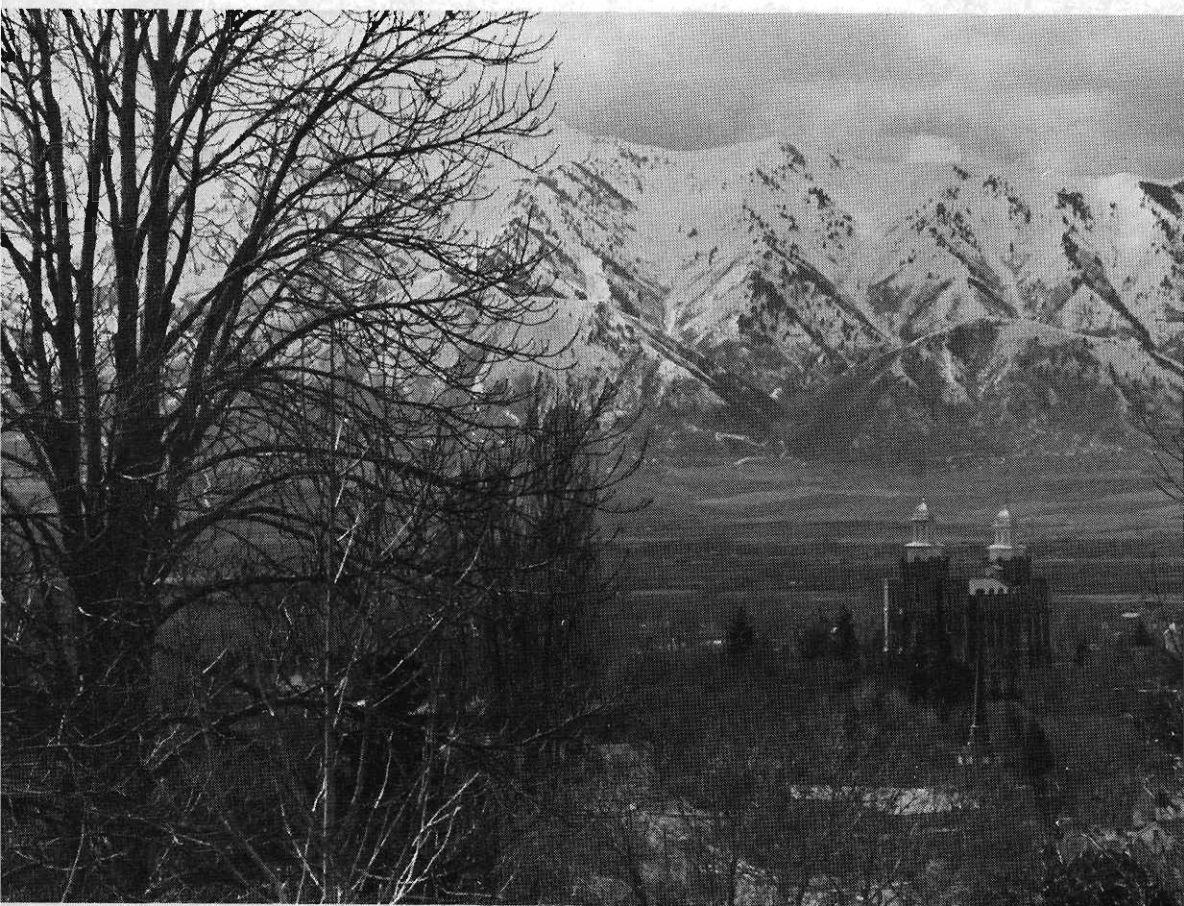












David Biedermann, a landscape architect, received his training at Utah State University in Logan. He works as a planner and is involved in ecological and conservation issues.